

2024 Construction Outlook 50.1 Million 500 Million Survey Results

Total Responses: 389, responses varied for some questions. Percentages are based on responses to each question and may not sum to 100 due to rounding.

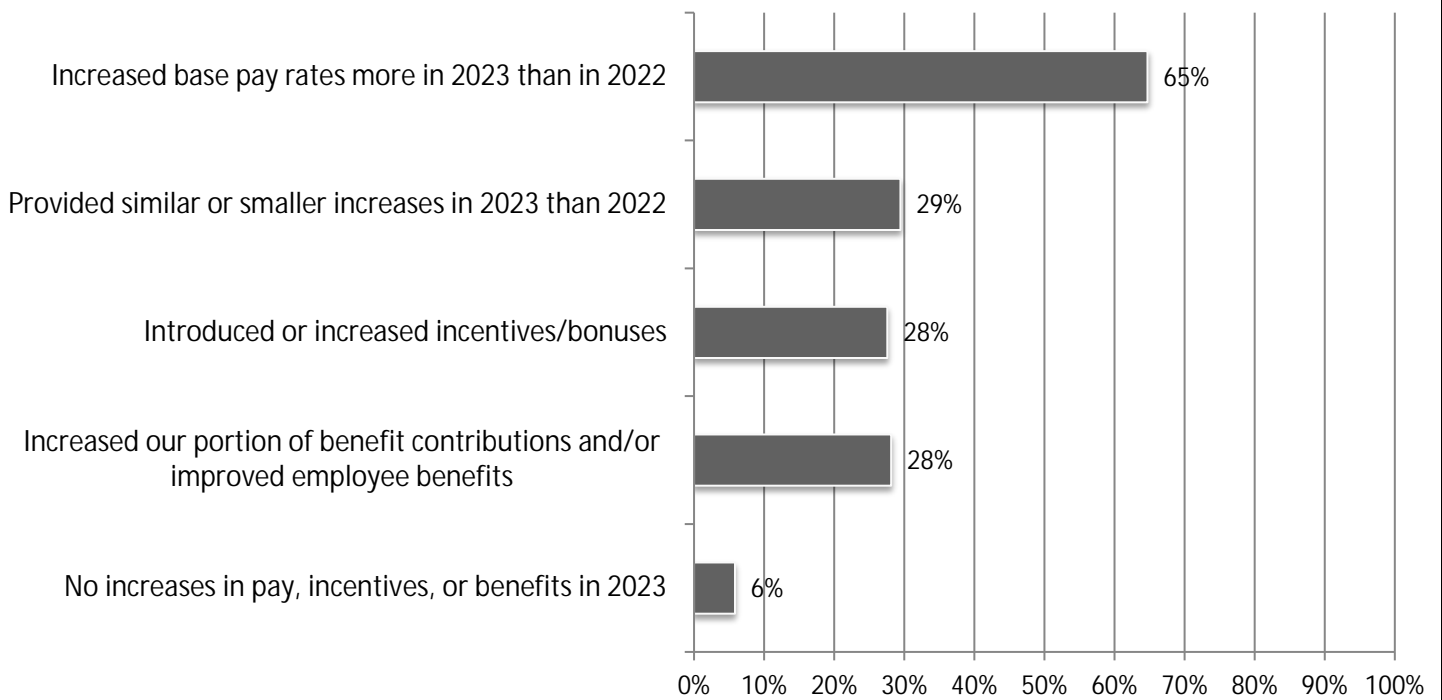
1. Compared to 2023, do you expect the available dollar value of projects you compete for in 2024 to be higher/lower/about the same (answer for all market areas in which your business operates)
Responses: 377

Higher	Lower	Same
45%	10%	45%
47%	15%	39%
40%	8%	52%
43%	13%	43%
39%	13%	48%
35%	10%	54%
35%	18%	47%
34%	18%	48%

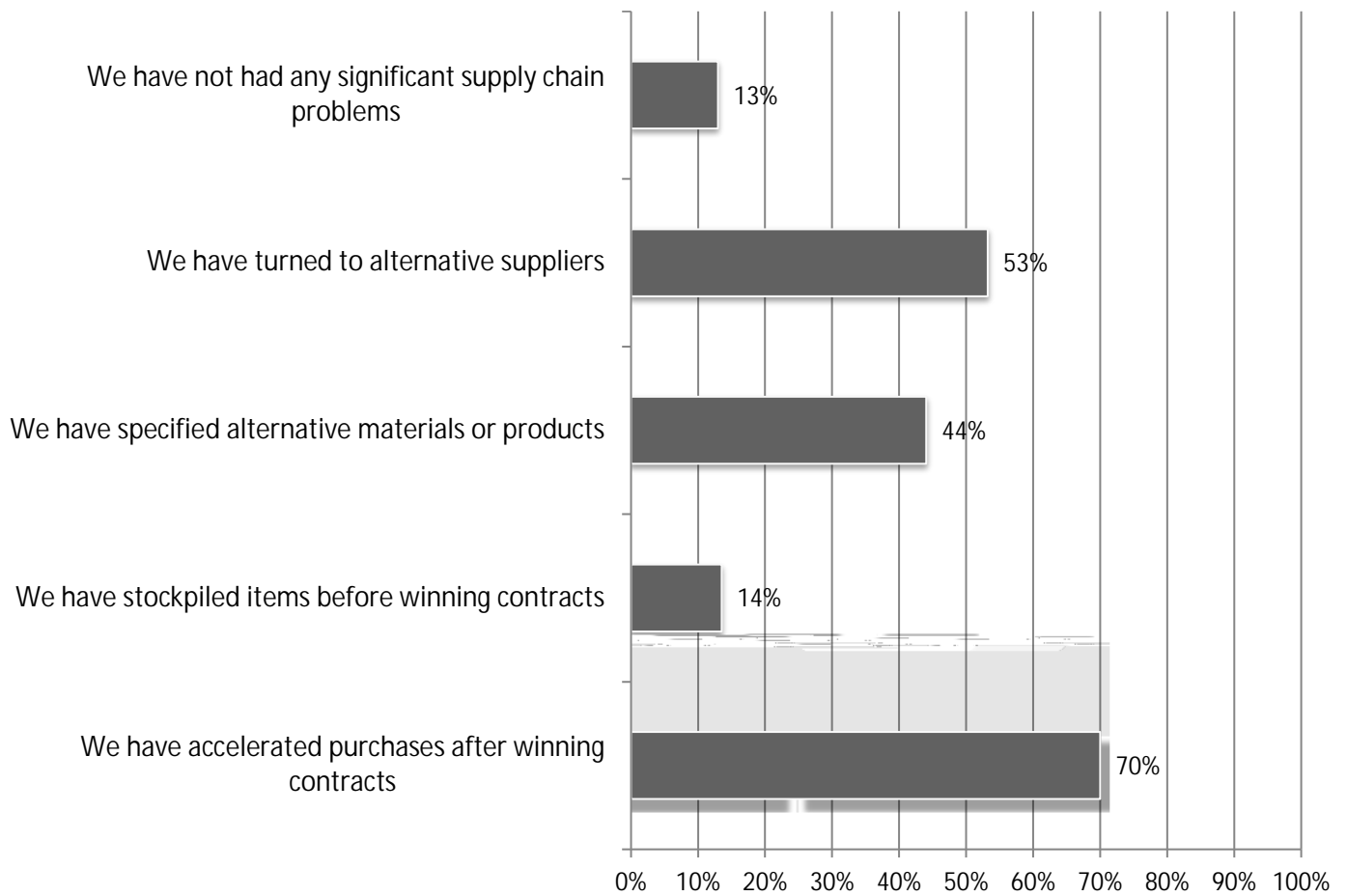
*Net equals difference between number of Higher and Lower responses as percent of total.

2. What percentage change do you

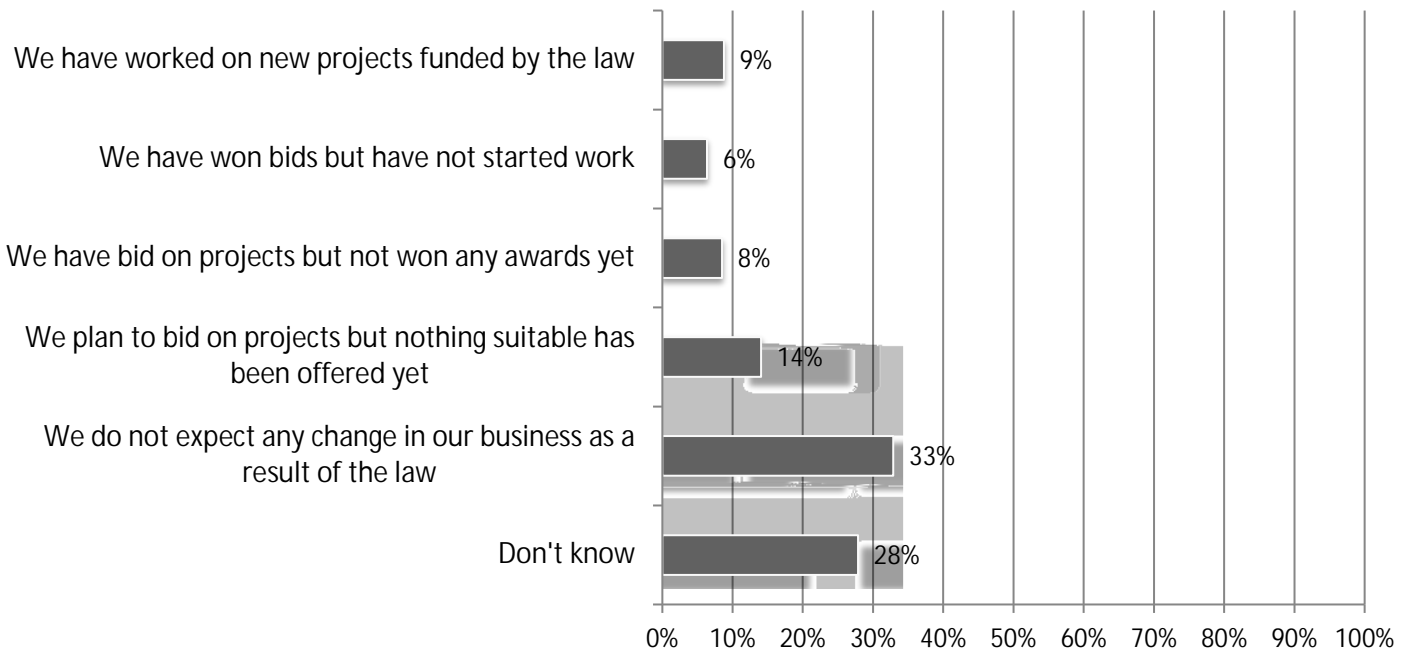
5. What changes did your firm make in pay or benefits in 2023? (mark all that apply) Responses: 37



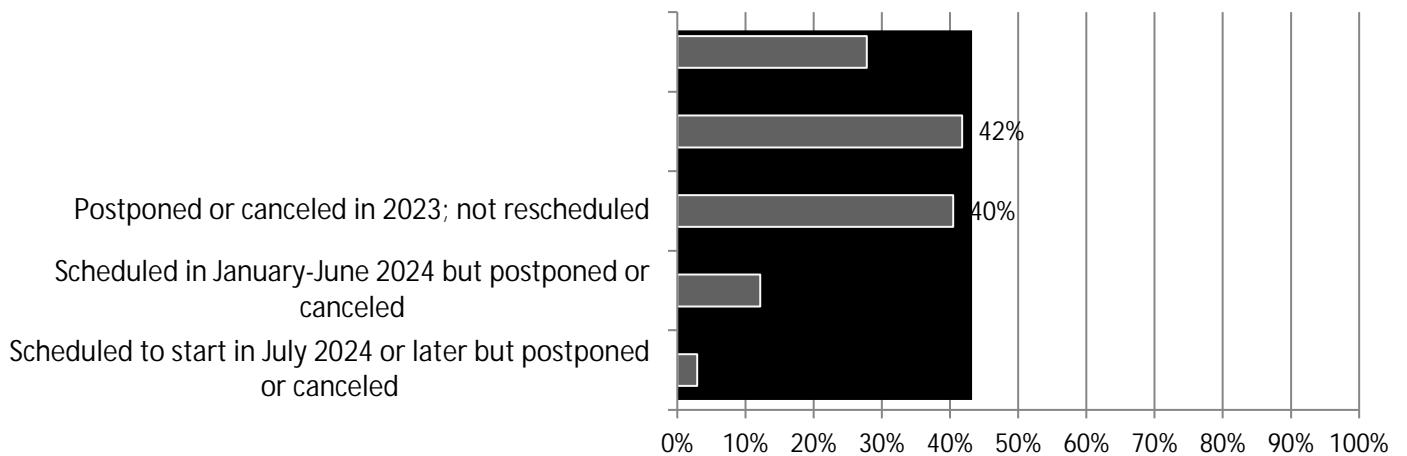
6. How has your firm responded to supply issues, if any? (mark all that apply) Responses: 370



7. What difference, if any, has the Infrastructure Investment and Jobs Act (the Bipartisan Infrastructure Law) made to your business? Responses: 377

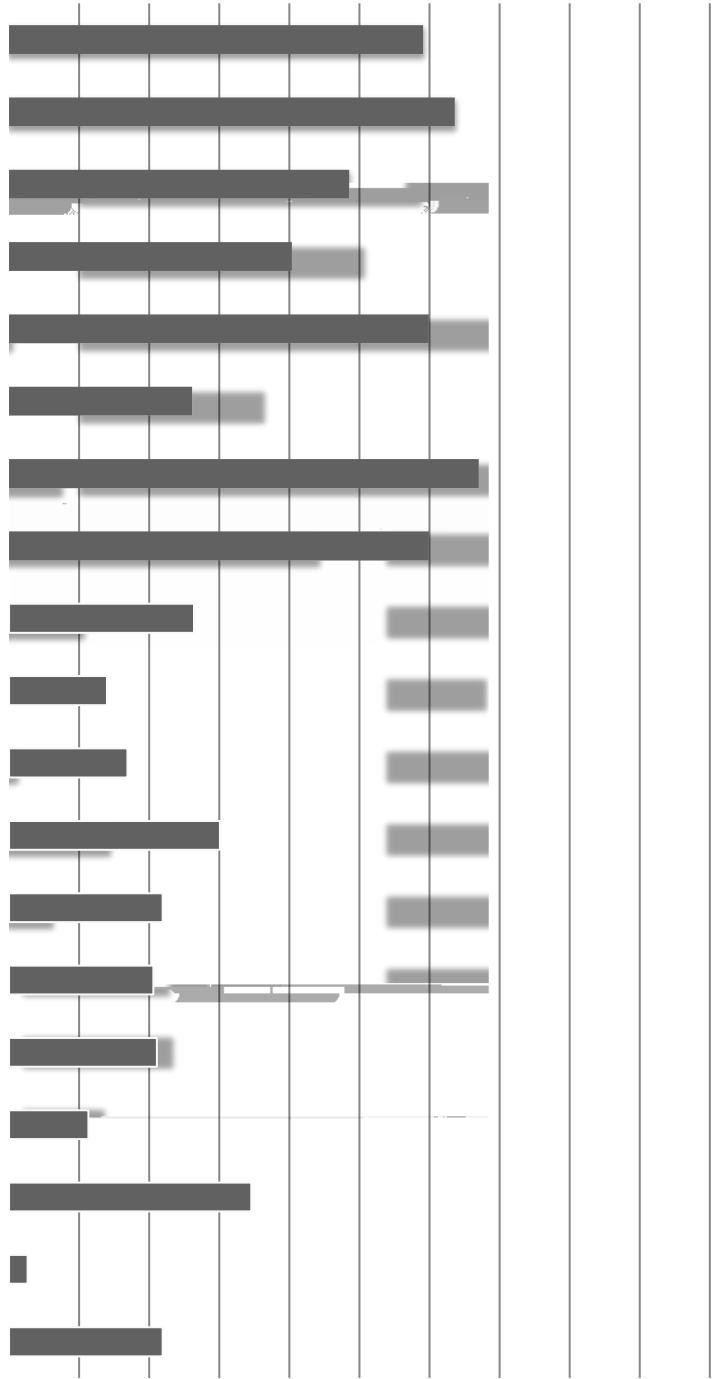


8. Did an owner postpone or cancel any projects that were scheduled to start in 2023 (or 2024) (check all that apply)? Responses: 378



9. If projects were postponed or canceled, what was the main reason? Responses: 317

10. What are your biggest concerns for 2022? (Check all that apply) Responses: 79



11. What challenges, if any, do you see regarding the safety and health of your firm's workers? (mark all that apply) Responses: 358

12. Does your company invest in Responses: 369

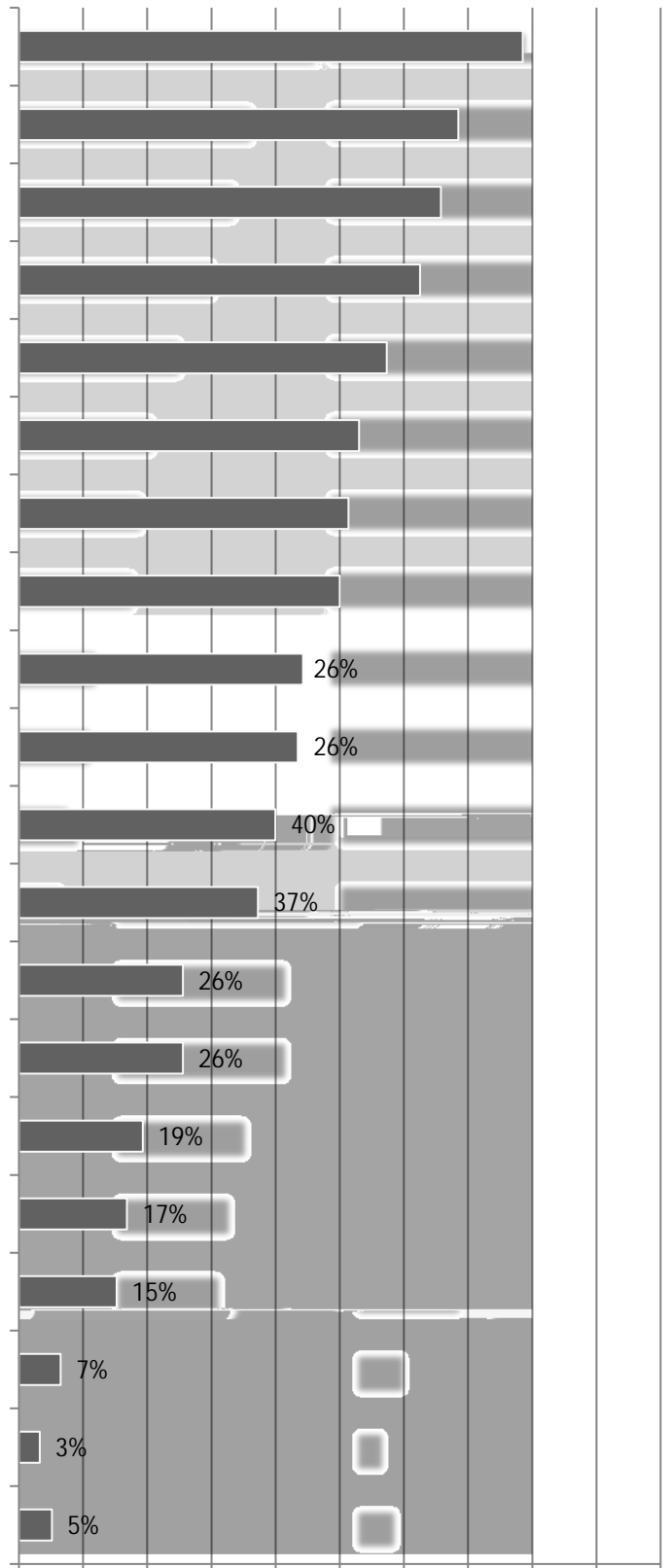
	Initial Investment	Increased Investment	Decreased Investment	No Investment
Artificial intelligence	23%	12%	1%	65%
Robotics	6%	10%	1%	84%
Drones	13%	39%	4%	43%
Autonomous equipment or vehicles	6%	6%	1%	87%
3D printing	9%	6%	2%	83%
Offsite production	11%	28%	1%	60%

13. Compared to 2021, will your firm's 2022 investment in the following technologies change? (mark all that apply) Response: 373

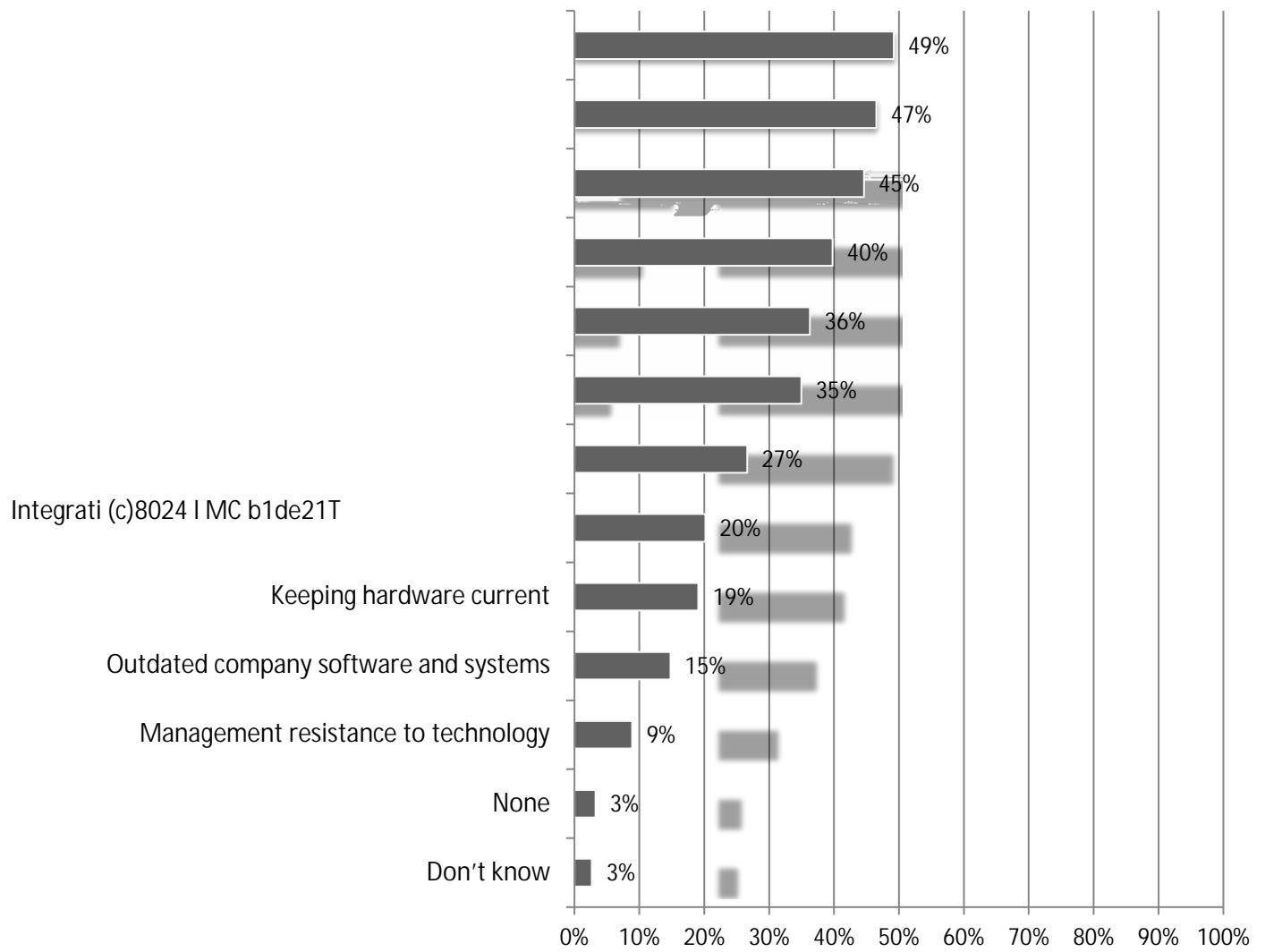
	Increase	Decrease	No change
	43%	2%	55%
Project management software	37%	2%	61%
Document management software	36%	1%	64%
Human resources (HR) software	31%	3%	66%
	30%	1%	69%
	29%	1%	69%
	28%	1%	71%
	24%	1%	75%
	23%	2%	75%
	22%	2%	76%
	21%	2%	78%
	20%	2%	77%
	14%	2%	84%
	13%	1%	86%
	10%	2%	89%

14. How does your company plan to use mobile software technology? (mark all that apply)

Responses: 8

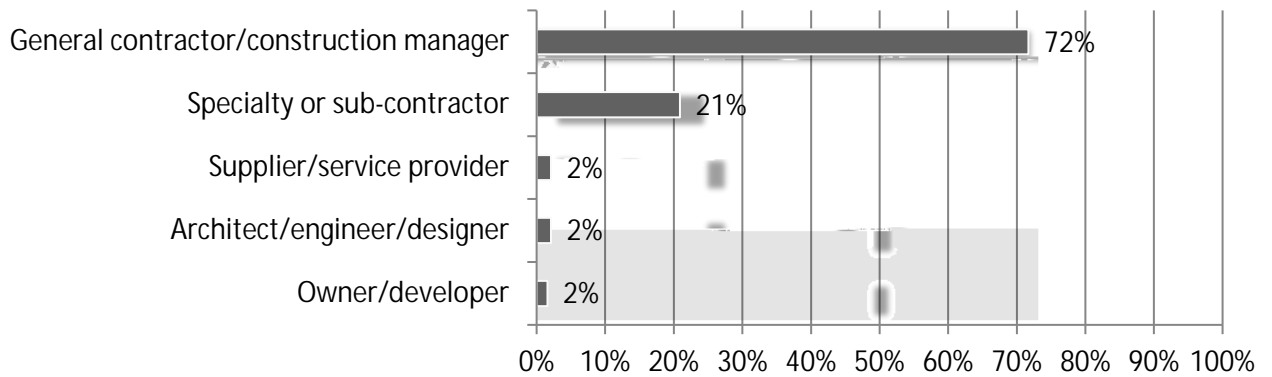


15. What are your biggest challenges (mark all that apply)? Responses 672

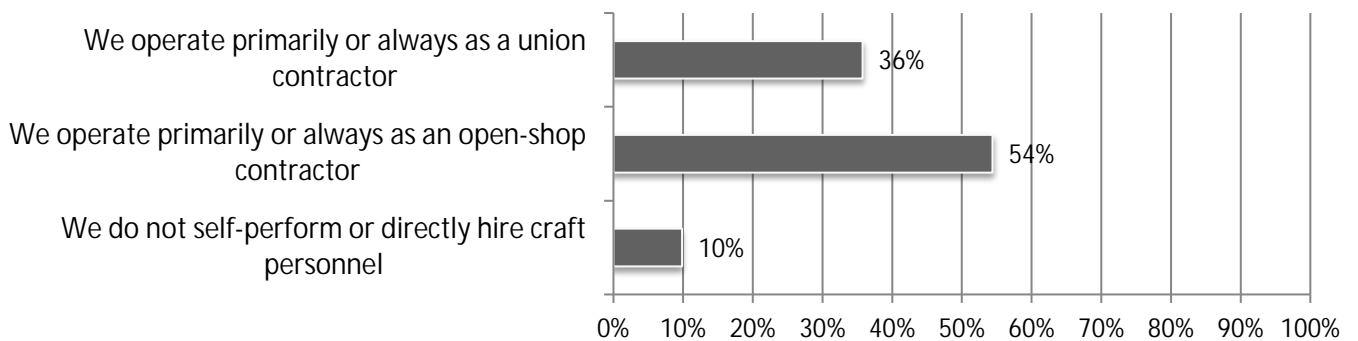


16. Does your firm use cloud-based technology in any of the following ways (mark all that apply)? Responses 360

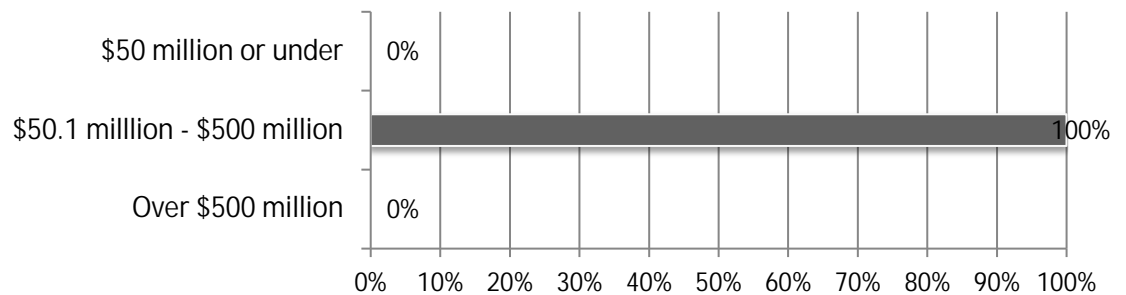
17. What best describes your firm's response? Responses: 78



18. When you self-perform construction work, do you operate as a union contractor or an open contractor? Responses: 375



19. Estimate the total dollar amount of work your firm performs annually. Responses: 380



20. How many total employees does your firm employ at all of its locations? Responses: 378

